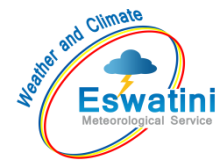


# AGROMETEOROLOGICAL BULLETIN

Doc No: TEA 3/3/7/2 F-004  
Revision No: 1  
Effective Date: 01.07.2017  
Page No: 1 of 5  
Approved by:



**REPORTING PERIOD:**  
**11 – 20 NOVEMBER 2024**



**ISSUE No.: 05**

**SEASON: 2024/25**

**RELEASED: 24/11/2024**

## CONTENTS

CONTENTS .....	1
HIGHLIGHTS .....	1
RAINFALL AND TEMPERATURES .....	2
RAINFALL .....	2
TEMPERATURES .....	3
MAIZE AND OTHER CROPS.....	3
CURRENT FARMING ACTIVITY .....	3
OTHER CROPS .....	3
MAIZE CROP STAGE AND CONDITION..	3
LIVESTOCK AND PASTURES .....	4
WATER SITUATION .....	4
MEDIUM-TERM OUTLOOK .....	4
RAINFALL .....	4
TEMPERATURE.....	4
SOIL MOISTURE .....	4
WIND SPEED .....	4

## HIGHLIGHTS

- **Below Normal rainfall observed...**
- **Fair vegetation condition...**
- **Few land preparation and planting activities...**
- **Decrease in rainfall is anticipated...**
- **Warm to hot temperatures forecasted...**
- **Decrease in soil moisture expected...**

Compiled and Issued by: Agrometeorological Unit,

Swaziland Meteorological Service, Ministry of Tourism and Environmental Affairs.

Box 2652, Mbabane, Swaziland. ☎ (+268) 2404 8859 / 2404 6274. Fax: 2404 1530

E-mail: [dudu@swazimet.gov.sz](mailto:dudu@swazimet.gov.sz)

## AGROMETEOROLOGICAL BULLETIN

Doc No: TEA 3/3/7/2 F-004

Revision No: 1

Effective Date: 01.07.2017

Page No: 2 of 5

Approved by:

### RAINFALL AND TEMPERATURES

#### RAINFALL

Below Normal rainfall was observed in the 2<sup>nd</sup> dekad of November 2024 countrywide (**Figure 1**) and (**Map 1**).

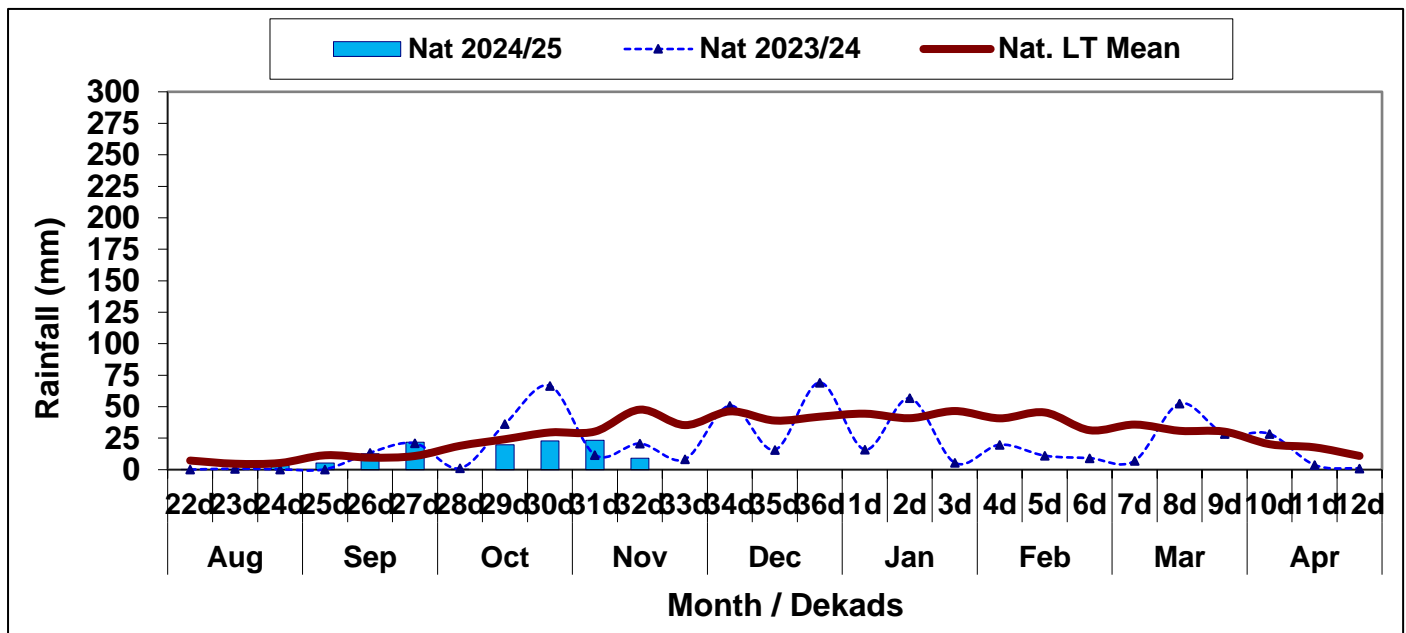
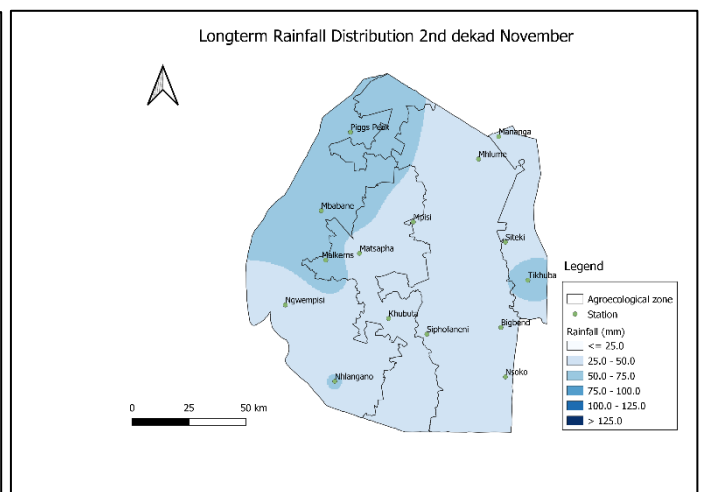
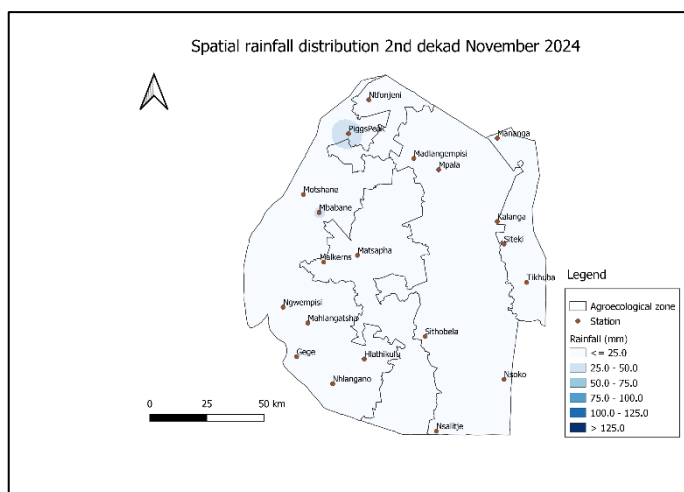


Figure 1: Rainfall distribution 2<sup>nd</sup> dekad November 2024



Map 1: Spatial rainfall distribution 2<sup>nd</sup> dekad November 2024

Map 2: Longterm Rainfall Distribution 2<sup>nd</sup> dekad November

# AGROMETEOROLOGICAL BULLETIN

Doc No: TEA 3/3/7/2 F-004  
Revision No: 1  
Effective Date: 01.07.2017  
Page No: 3 of 5  
Approved by:

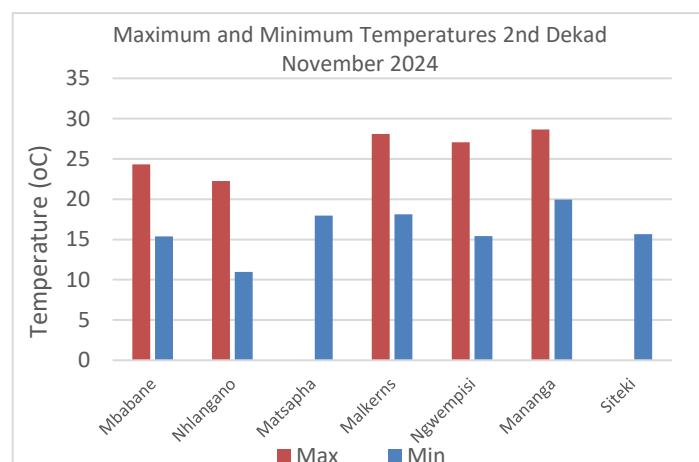
Not much rainfall was received in all the Agroecological zones. (Table 1).

**Table 1:** Rainfall (mm) 2<sup>nd</sup> dekad November 2024

	HV	MV	LV	LP
<b>2023/24</b>	32.9	19.1	11.8	12.7
<b>Average</b>	57.6	47.9	38.8	49.5
<b>2024/25</b>	10.8	6.1	9.4	12.9
<b>Anomaly</b>	<b>-46.7</b>	<b>-41.9</b>	<b>-29.4</b>	<b>-36.6</b>

## TEMPERATURES

High temperatures were observed during the reporting period, with a 3 days heat wave of temperatures exceeding 30°C in the Highveld and 40°C in the Lowveld (Figure 2).



**Figure 2:** Maximum and Minimum temperatures 2<sup>nd</sup> dekad of November 2024

## MAIZE AND OTHER CROPS

### CURRENT FARMING ACTIVITY

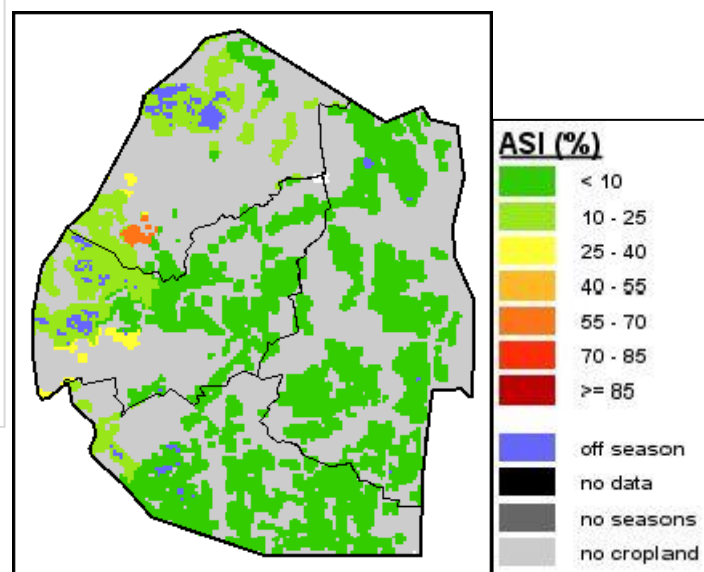
Most farmers have commenced land preparation and planting. Some areas in the western part of the country are depicting crop water stress (Image 1).

### OTHER CROPS

No other crops have been reported to have been planted.

### MAIZE CROP STAGE AND CONDITION

Early planted maize is mostly at early vegetative stage. The crop condition is reported to be deteriorating as a result of moisture shortages and high temperatures.



**Image 1:** Agriculture Stress Index 2<sup>nd</sup> dekad November 2024

Source: FAO-GIEWS

Compiled and Issued by: Agrometeorological Unit,

Swaziland Meteorological Service, Ministry of Tourism and Environmental Affairs.

Box 2652, Mbabane, Swaziland. (+268) 2404 8859 / 2404 6274. Fax: 2404 1530

E-mail: [dudu@swazimet.gov.sz](mailto:dudu@swazimet.gov.sz)

## AGROMETEOROLOGICAL BULLETIN

Doc No: TEA 3/3/7/2 F-004

Revision No: 1

Effective Date: 01.07.2017

Page No: 4 of 5

Approved by:

### LIVESTOCK AND PASTURES

Livestock is in fair to poor condition as there is not much improvement in rangeland condition.

### WATER SITUATION

The dams in the country are showing a slightly decrease as compared to last week, only Mnjoli dam is showing a slight improvement in water storage. Lubovane, Mnjoli and Maguga dam are atleast above 70% of their storage capacities, at 79%, 74% and 72 % respectively. While Hawane dam is at 45% and Luphohlo dam at 33%.

If rains improve, the dams storage capacities are anticipated to increase. The nation is urged to continue conserving water.

**Table 2: Dam storage capacity as at 11<sup>th</sup> November 2024**

Name of Dam	River	Full Supply Storage Million Cubic meters	Percentage Storage (%) 11 <sup>th</sup> Nov, 2024
Mnjoli	Black Mbuluzi	177	74.54
Lubovane	Great Usuthu	155	79.06
Maguga	Komati	332	72.90
Hawane	Black Mbuluzi	2.75	45.00
Luphohlo	Lusushwana	23.6	33.20

### MEDIUM-TERM OUTLOOK

#### RAINFALL

Decrease in rainfall is expected in the outlook period.

#### TEMPERATURE

Warm to hot temperatures are anticipated in the outlook period.

#### SOIL MOISTURE

A decrease in soil moisture is expected in the outlook period.

#### WIND SPEED

Wind will generally be light to moderate in the outlook period

**NB: Outlook period is ten days from date of issue**

Compiled and Issued by: Agrometeorological Unit,

Swaziland Meteorological Service, Ministry of Tourism and Environmental Affairs.

Box 2652, Mbabane, Swaziland.  (+268) 2404 8859 / 2404 6274. Fax: 2404 1530

E-mail: [dudu@swazimet.gov.sz](mailto:dudu@swazimet.gov.sz)

## AGROMETEOROLOGICAL BULLETIN

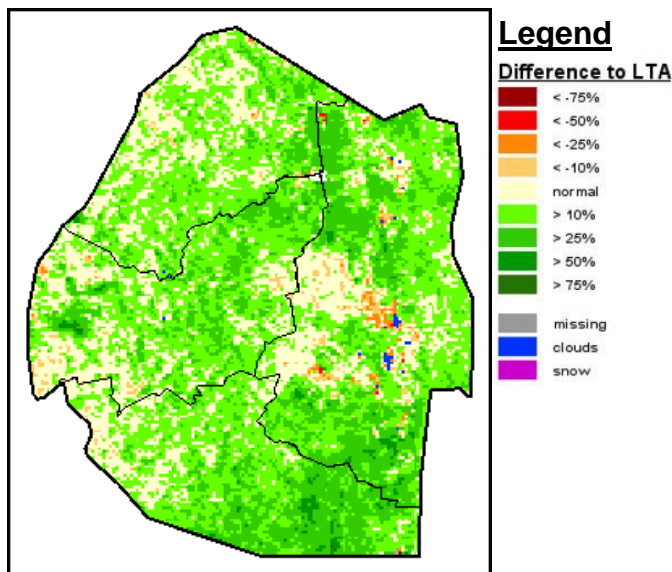
Doc No: TEA 3/3/7/2 F-004

Revision No: 1

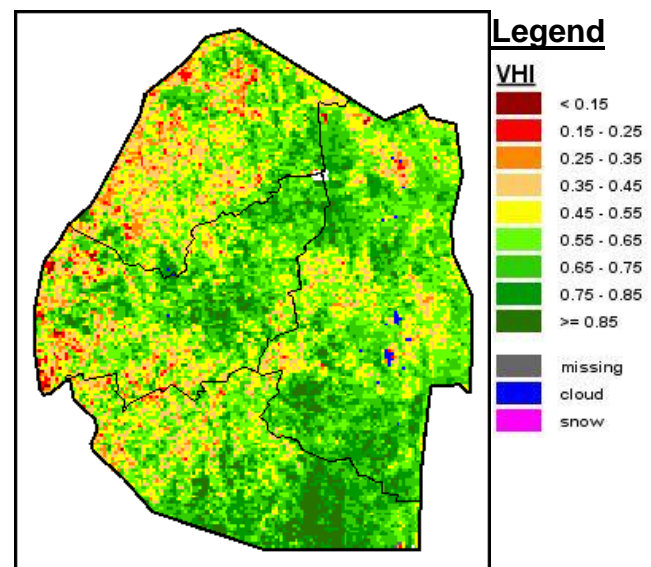
Effective Date: 01.07.2017

Page No: 5 of 5

Approved by:



**Image 2: Normalized Difference Vegetation Index (NDVI) Anomaly (2<sup>nd</sup> Dekad November 2024)**  
Source: FAO-GIEWS



**Image 3: Vegetation Health Index (VHI) (2<sup>nd</sup> Dekad November 2024)**  
Source: FAO-GIEWS